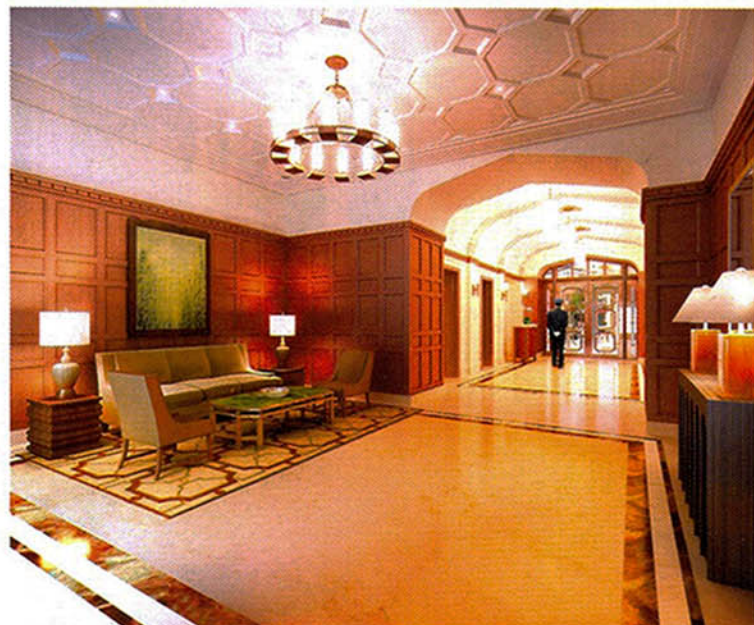


# EAST SIDE SPLENDOR

*Traditional accents, eco-friendly touches, and modern amenities come together at The Brompton on the Upper East Side*

BY DIANA AYDIN

WITH ITS RED brick and limestone exterior, gothic details, and arched entrance, The Brompton, a new luxury condominium designed by Robert A.M. Stern Architects and developed by Related Companies, is in sharp contrast with the sleek, narrow facades that dominate the Manhattan skyline. It's a contrast that makes The Brompton stand out, not only as a desirable residence on the Upper East Side, but also as a living space that is "stylishly proper"—the building's calling card.



Following the success of The Chatham, a luxury condominium Related commissioned Stern to build in 1997, The Brompton at 205 East 85th Street is inspired by the great historic Manhattan apartments that still line Park Avenue and the Silk Stocking District. When the 22-story condominium is completed, with expected occupancy in Fall 2008, it will offer residents modern living accommodations within a traditional architectural setting. The traditional brick exterior of The Brompton creates a connection to that historical culture and ambiance of the neighborhood. "We definitely wanted to offer customers an alternative," says David Wine, the Vice Chairman of Related. "We wanted to respect

that tradition on the Upper East Side." But the interior of The Brompton is a different story. The building features 206 condominiums, from studios to five-bedroom condos, and two townhouses. Rooms run from 516 square-feet to 4,513 square-feet for townhouses, and can cost from \$650,000 to more than \$7 million. And with white oak floors, marble floors in the bathrooms and powder rooms, stainless-steel kitchen appliances, and high-speed Internet, The Brompton is anything but traditional. The Brompton's unique style also comes to play in the modern touches on the interior of the condominium, like expansive windows that fill rooms with light, state of the art technology, and a full range of

contemporary amenities. Included in the purchase of the residences is membership to an Equinox Fitness Club, directly adjacent to The Brompton. The club includes a fitness center and spa, and will feature a private lounge for Brompton residents only, assuring that they will find tranquility amidst the chaos of city life.

The condominium will also showcase family-friendly features like a children's playroom and outdoor play area.

In designing The Brompton, Related and Robert A.M. Stern Architects sought to foster a connection amongst the community and residents of the Upper East Side. Related chose the architectural firm not only because Stern is "the preeminent residential architect in the country," but also because of his commitment to designing buildings that effortlessly fit within a neighborhood. In fact, The Brompton will only improve the architecture of the Upper East Side. "We think that it elevates all of the buildings around it," Wine says. And when The Brompton opens for occupancy in 2008, residents will welcome surroundings and spaces that provide them with both a flexible family life and the luxurious lifestyle of the Upper East Side. ♦

*This page: The exterior of The Brompton, designed by Robert A.M. Stern Architects and developed by Related Companies. Opposite page: The building's lobby and grand entryway.*

